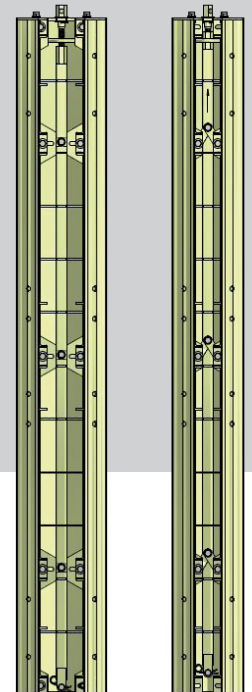
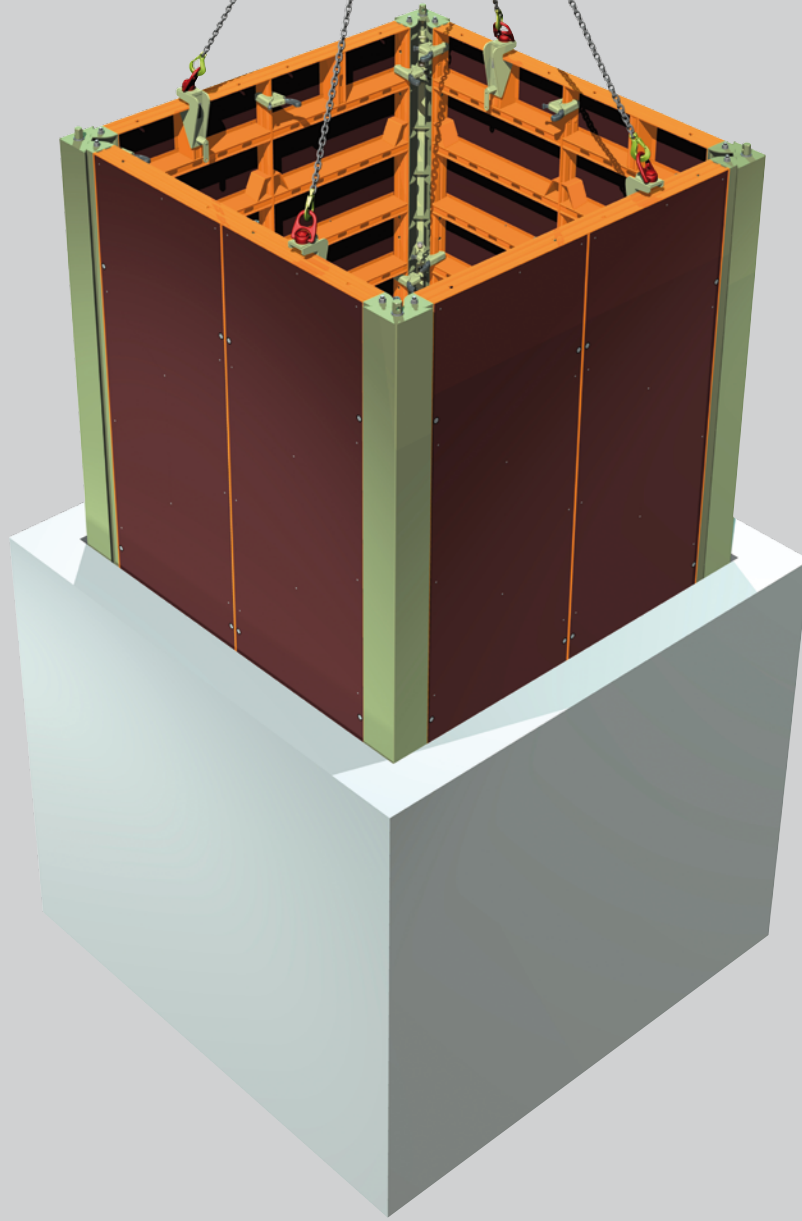


Dismantling – make it easy...



...with the LOGO.3 Dismantling inside corner post

PASCHA
Service in Formwork + Shoring

LOGO.3 Dismantling inside corner post

Dismantling – make it easy

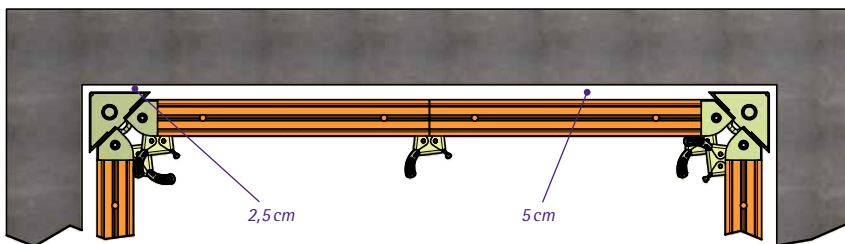


Corner post closed



Corner post open

There is a hexagonal nut at the upper side of the inside corner post which will be turned to dismantle (clockwise) for dismantling and anticlockwise for pushing in right position before concreting. A spanner size 36 or a tie rod DW15 put in the hole of the hexagonal nut will be sufficient for turning.



Benefits:

- optimized dismantling procedure
- complete inner formwork can be moved as a whole unit
- enormous gain of time



Ask your Formwork Consultant
or the Manager
Export Team



Winfried Stoll
Phone: +49 (0) 78 32 / 71 - 242
winfried.stoll@paschal.de



PASCHAL
Service in Formwork + Shoring